

MK286-24H-8S3P-24V-6W-L280W24-21155

Built-in PCB lighting modules

The module is characterised by its particularly easy-to-use mounting and connection options (ZHAGA book 7-compliant hole spacing). Thanks to producing a homogeneous light field without any discernible individual light points, these LED modules are ideal for use with reflectors in luminaires constructed for T5 and T8 lamps.



Technical data

Dimensions: 280x 24 mm
 On-board push-in terminals (WAGO 2060)
 Allowed operating temperature at tc point:
 -40 to 85 °C (> 270 mA)
 Use of external LED constant-current drivers
 Efficiency up to 198 lm/W
 Colour rendering index Ra: > 80
 Colour accuracy initially: 3 SDCM;
 after 70,000 hrs. operating time: 4 SDCM
 Lumen maintenance L80/B10:
 70,000 hrs. (If 270 mA)



Specific technical data

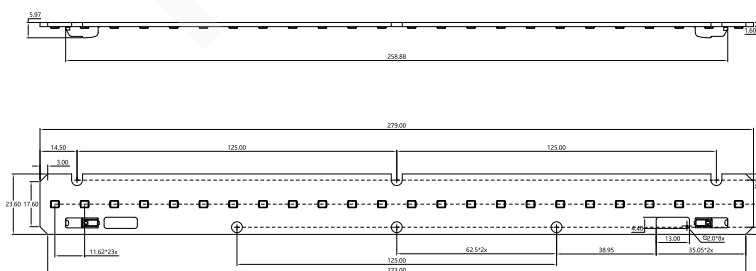
Type	Typ. luminous flux at tp = 25 °C	Typ. luminous flux at tp = 65 °C	Typ. Colour temperature (CCT)	Colour rendering index CRI	Min. forward voltage at tp = 65 °C	Max. forward voltage at tp = 25 °C	Typ. forward current	Typ. power consumption at tp = 65 °C	Max. forward current	Efficacy of the module at tp = 25 °C	Efficacy of the module at tp = 65 °C
------	----------------------------------	----------------------------------	-------------------------------	----------------------------	------------------------------------	------------------------------------	----------------------	--------------------------------------	----------------------	--------------------------------------	--------------------------------------

Linear-Z LED-module – L280 W24 H8

MK286-8S3P-24X280mm-21155	1,021Lm	1,080Lm	2,700K	>80	20V	27.2V	270mA	5.96W	1050mA	173Lm/W	183Lm/W
	1,033Lm	1,092Lm	3,000K				270mA	5.96W		175Lm/W	185Lm/W
	1,068Lm	1,127Lm	3,500K				270mA	5.96W		181Lm/W	191Lm/W
	1,097Lm	1,156Lm	4,000K				270mA	5.96W		186Lm/W	196Lm/W
	1,092Lm	1,151Lm	5,000K				270mA	5.96W		185Lm/W	195Lm/W
	1,109Lm	1,168Lm	5,700K				270mA	5.96W		188Lm/W	198Lm/W
	1,080Lm	1,139Lm	6,500K			270mA	5.96W		183Lm/W	193Lm/W	

1. Tolerance of useful light flux - 0 % / + 15 %. Measurement uncertainty + 10 %.
 2. Typ. Measurement uncertainty + 10 %. Based on integrating sphere.
 3. Max. Measurement uncertainty + 10 %. Based on calculation.

DIMENSIONS (All dimensions in mm)



Typical applications

- Installation in luminaires comerciais
- Office lighting
- Retail, corridor and shelf lighting
- T5/T8 replacement as built-in module
- Furniture lighting
- Backlighting for advertising

Website

<http://www.led-module.cn/pro1274>

