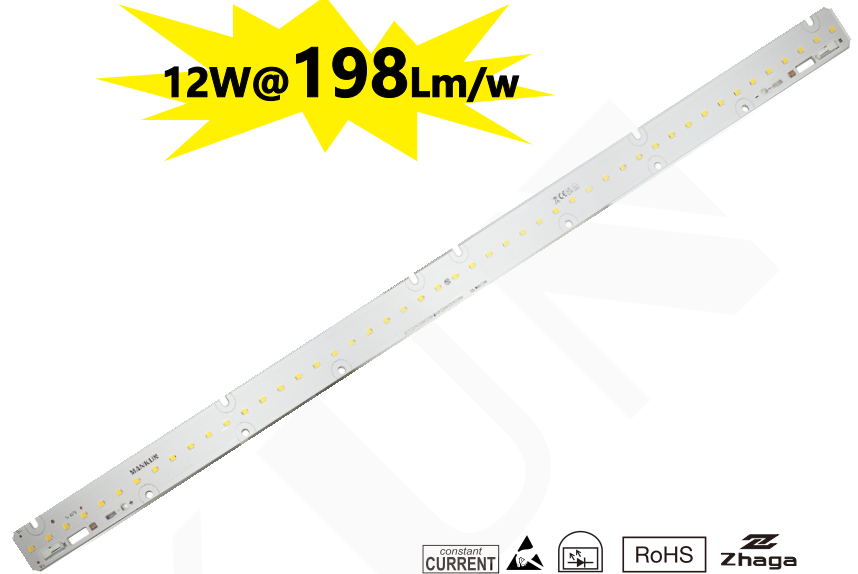


## MK286-48H-16S3P-48V-12W-L560W24-21157

### Built-in PCB lighting modules

The module is characterised by its particularly easy-to-use mounting and connection options (ZHAGA book 7-compliant hole spacing). Thanks to producing a homogeneous light field without any discernible individual light points, these LED modules are ideal for use with reflectors in luminaires constructed for T5 and T8 lamps.



### Technical data

Dimensions: 560x 24 mm  
On-board push-in terminals (WAGO 2060)  
Allowed operating temperature at tc point:  
-40 to 85 °C (> 270 mA)  
Use of external LED constant-current drivers  
Efficiency up to 198 lm/W  
Colour rendering index Ra: > 80  
Colour accuracy initially: 3 SDCM;  
after 70,000 hrs. operating time: 4 SDCM  
Lumen maintenance L80/B10:  
70,000 hrs. (lf270 mA)



### Specific technical data

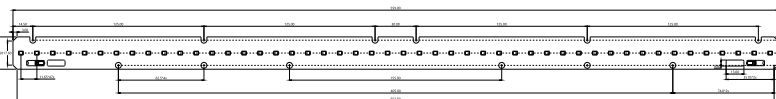
Type	Typ. luminous flux at tp = 25 °C	Typ. luminous flux at tp = 65 °C	Typ. Colour temperature (CCT)	Colour rendering index CRI	Min. forward voltage at tp = 65 °C	Max. forward voltage at tp = 25 °C	Typ. forward current	Typ. power consumption at tp = 65 °C	Max. forward current	Efficacy of the module at tp = 25 °C	Efficacy of the module at tp = 65 °C
------	----------------------------------	----------------------------------	-------------------------------	----------------------------	------------------------------------	------------------------------------	----------------------	--------------------------------------	----------------------	--------------------------------------	--------------------------------------

#### Linear-Z LED-module – L560 W24 H8

MK286-16S3P-24X560mm-21157	1,903Lm	2,013Lm	2,700K	>80	40V	54.4V	270mA	11.92W	1050mA	173Lm/W	183Lm/W
	1,925Lm	2,035Lm	3,000K				270mA	11.92W		175Lm/W	185Lm/W
	1,991Lm	2,101Lm	3,500K				270mA	11.92W		181Lm/W	191Lm/W
	2,046Lm	2,156Lm	4,000K				270mA	11.92W		186Lm/W	196Lm/W
	2,035Lm	2,145Lm	5,000K				270mA	11.92W		185Lm/W	195Lm/W
	2,068Lm	2,178Lm	5,700K				270mA	11.92W		188Lm/W	198Lm/W
	2,013Lm	2,123Lm	6,500K				270mA	11.92W		183Lm/W	193Lm/W

1. Tolerance of useful light flux - 0 % / + 15 %. Measurement uncertainty + 10 %.  
2. Typ. Measurement uncertainty + 10 %. Based on integrating sphere.  
3. Max. Measurement uncertainty + 10 %. Based on calculation.

### DIMENSIONS (All dimensions in mm)



### Typical applications

- Installation in luminaires comerciais
- Office lighting
- Retail, corridor and shelf lighting
- T5/T8 replacement as built-in module
- Furniture lighting
- Backlighting for advertising

### Website

<http://www.led-module.cn/prol275>

