

## LL286-144H-12S12P-36V-40W-L1119R5W20-21134

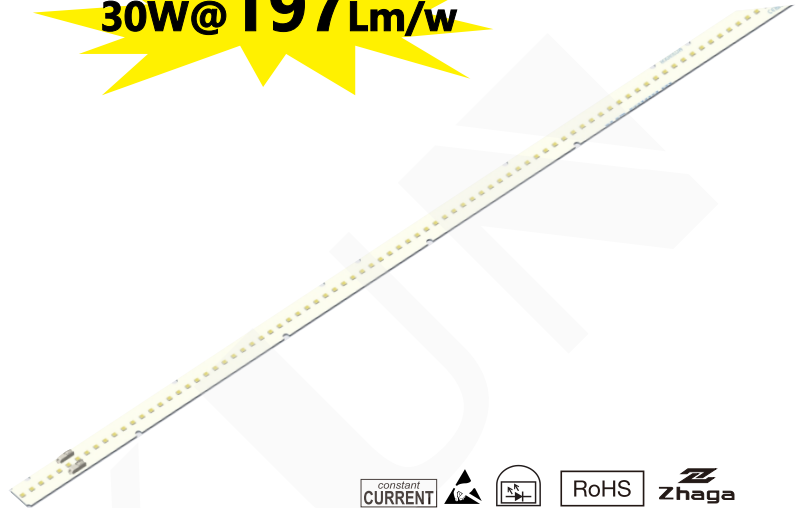
### Built-in PCB lighting modules

The module is characterised by its particularly easy-to-use mounting and connection options (ZHAGA book 7-compliant hole spacing). Thanks to producing a homogeneous light field without any discernible individual light points, these LED modules are ideal for use with reflectors in luminaires constructed for T5 and T8 lamps.



### Technical data

Dimensions: 1119.5x20 mm  
 On-board push-in terminals (WAGO 2060)  
 Allowed operating temperature at tc point:  
 -40 to 85 °C (> 600 mA)  
 Use of external LED constant-current drivers  
 Efficiency up to 197 lm/W  
 Colour rendering index Ra: > 80  
 Colour accuracy initially: 3 SDCM;  
 after 70,000 hrs. operating time: 4 SDCM  
 Lumen maintenance L80/B10:  
 70,000 hrs. (lf600 mA)



### Specific technical data

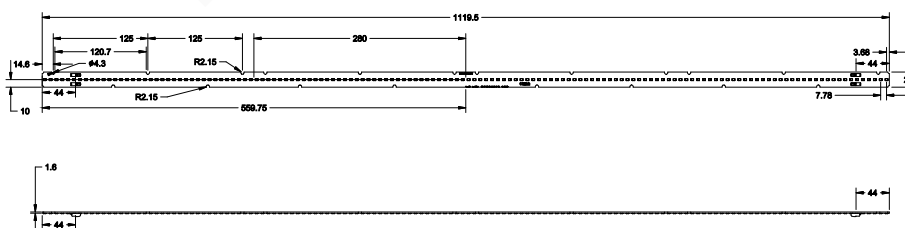
Type	Typ. luminous flux at tp = 25 °C	Typ. luminous flux at tp = 65 °C	Typ. Colour temperature (CCT)	Colour rendering index CRI	Min. forward voltage at tp = 65 °C	Max. forward voltage at tp = 25 °C	Typ. forward current	Typ. power consumption at tp = 65 °C	Max. forward current	Efficiency of the module at tp = 25 °C	Efficiency of the module at tp = 65 °C
------	----------------------------------	----------------------------------	-------------------------------	----------------------------	------------------------------------	------------------------------------	----------------------	--------------------------------------	----------------------	--	--

#### Linear-Z LED-module – L1119.5 W20H8

LL286-12S12P-1119.5X20mm-21134	5,278Lm	5,075Lm	2,700K	>80	30V	34.8V	600mA	29.85W	1800mA	182Lm/W	175Lm/W
	5,394Lm	5,191Lm	3,000K				600mA	29.25W		186Lm/W	179Lm/W
	5,626Lm	5,423Lm	4,000K				600mA	29.25W		194Lm/W	187Lm/W
	5,655Lm	5,452Lm	5,000K				600mA	29.25W		195Lm/W	188Lm/W
	5,713Lm	5,510Lm	5,700K				600mA	29.25W		197Lm/W	190Lm/W
	5,626Lm	5,423Lm	6,500K				600mA	29.25W		194Lm/W	187Lm/W

\* The values mentioned above represent only statistical variables on account of the complex manufacturing process of light emitting diodes. The values do not necessarily correspond exactly to the actual parameters of every single product which can vary from the typical specification.  
 \*\* Production tolerance of voltage and power consumption: +10%/-4%; Measuring tolerance of luminous flux: ±7%  
 \*\*\* Measuring tolerance of CRI: ±2 | CRI > 80 on request

### DIMENSIONS (All dimensions in mm)



### Typical applications

- Installation in luminaires comerciais
- Office lighting
- Retail, corridor and shelf lighting
- T5/T8 replacement as built-in module
- Furniture lighting
- Backlighting for advertising

### Website

<http://www.led-module.cn/prol282>

