

MK280-28H-14S2P-42V-9W-L280W40-15846

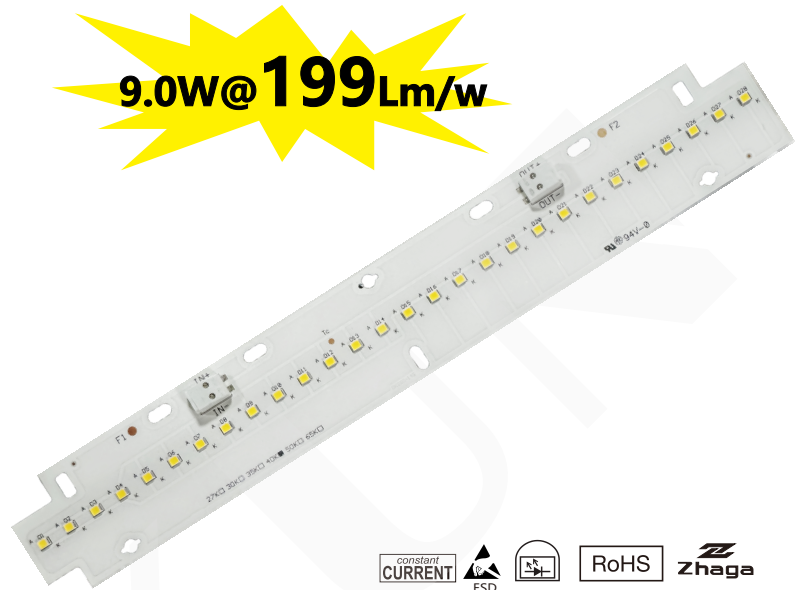
Built-in PCB lighting modules

The module is characterised by its particularly easy-to-use mounting and connection options (ZHAGA book 7-compliant hole spacing). Thanks to producing a homogeneous light field without any discernible individual light points, these LED modules are ideal for use with reflectors in luminaires constructed for T5 and T8 lamps.

9.0W@199Lm/w

Technical data

Dimensions: 280x 40 mm
 On-board push-in terminals (WAGO 2060)
 Allowed operating temperature at tc point:
 -40 to 85 °C (> 250 mA)
 Use of external LED constant-current drivers
 Efficiency up to 199 lm/W
 Colour rendering index Ra: > 80
 Colour accuracy initially: 3 SDCM;
 after 70,000 hrs. operating time: 4 SDCM
 Lumen maintenance L80/B10:
 70,000 hrs. (I_f250 mA)



Specific technical data

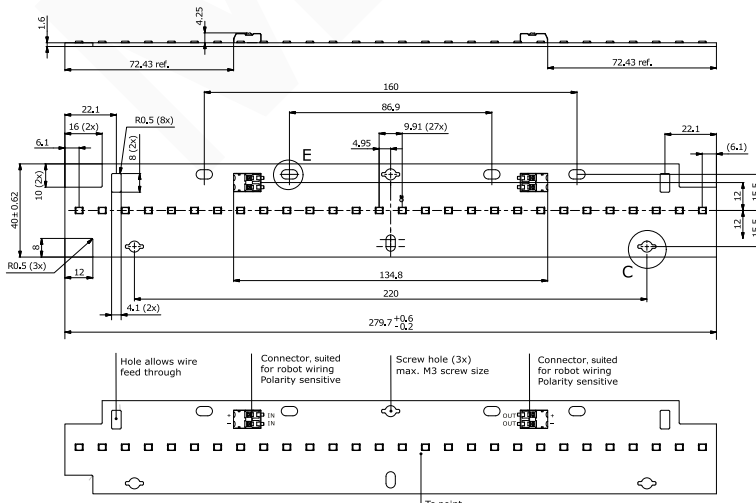
Type	Typ. luminous flux at tp = 25 °C	Typ. luminous flux at tp = 65 °C	Typ. Colour temperature (CCT)	Colour rendering index CRI	Min. forward voltage at tp = 65 °C	Max. forward voltage at tp = 25 °C	Typ. forward current	Typ. power consumption at tp = 65 °C	Max. forward current	Efficacy of the module at tp = 25 °C	Efficacy of the module at tp = 65 °C
------	----------------------------------	----------------------------------	-------------------------------	----------------------------	------------------------------------	------------------------------------	----------------------	--------------------------------------	----------------------	--------------------------------------	--------------------------------------

Linear-Z LED-module – L280 W40 H8

	1,647Lm	1,584Lm	2,700K				230mA	8.96W		185Lm/W	178Lm/W
MK280-	1,673Lm	1,611Lm	3,000K				230mA	8.96W		188Lm/W	181Lm/W
14S2P-	1,771Lm	1,709Lm	4,000K	> 80	35V	40.6V	230mA	8.96W	300mA	199Lm/W	192Lm/W
280X40mm	1,771Lm	1,709Lm	5,000K				230mA	8.96W		199Lm/W	192Lm/W
-15846	1,858Lm	1,794Lm	5,700K				230mA	9.24W		202Lm/W	195Lm/W
	1,753Lm	1,691Lm	6,500K				230mA	8.96W		197Lm/W	190Lm/W

* The values mentioned above represent only statistical variables on account of the complex manufacturing process of light emitting diodes. The values do not necessarily correspond exactly to the actual parameters of every single product which can vary from the typical specification.
 ** Production tolerance of voltage and power consumption: +10%/-4%; Measuring tolerance of luminous flux: ±7%
 *** Measuring tolerance of CRI: ±2 | CRI > 80 on request

DIMENSIONS (All dimensions in mm)



Typical applications

- Installation in luminaires comerciales
- Office lighting
- Retail, corridor and shelf lighting
- T5/T8 replacement as built-in module
- Furniture lighting
- Backlighting for advertising

Website

<http://www.led-module.cn/pro1307>

