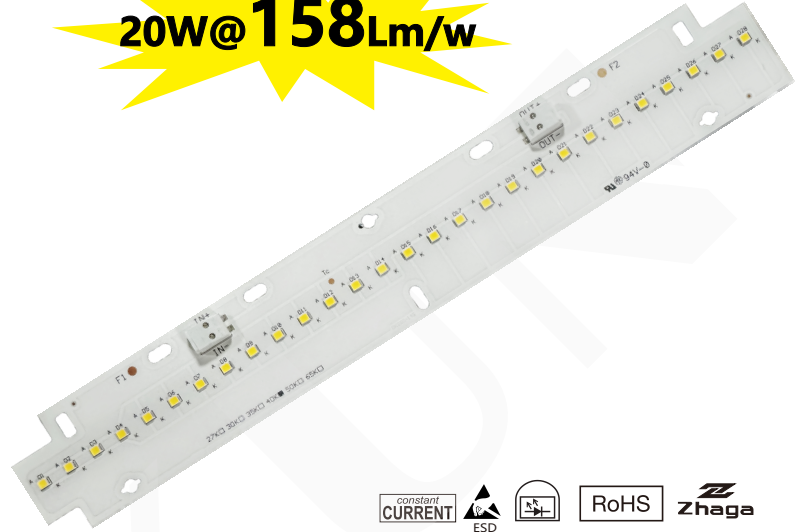


MK280-28H-14S2P-84V-20W-L280W40-15849

Built-in PCB lighting modules

The module is characterised by its particularly easy-to-use mounting and connection options (ZHAGA book 7-compliant hole spacing). Thanks to producing a homogeneous light field without any discernible individual light points, these LED modules are ideal for use with reflectors in luminaires constructed for T5 and T8 lamps.

20W@158lm/w



Technical data

- Dimensions: 280x40 mm
- On-board push-in terminals (WAGO 2060)
- Allowed operating temperature at tc point: -40 to 85 °C (> 240 mA)
- Use of external LED constant-current drivers
- Efficiency up to 158lm/W
- Colour rendering index Ra: > 80
- Colour accuracy initially: 3 SDCM; after 70,000 hrs. operating time: 4 SDCM
- Lumen maintenance L80/B10: 70,000 hrs. (lf240 mA)



Specific technical data

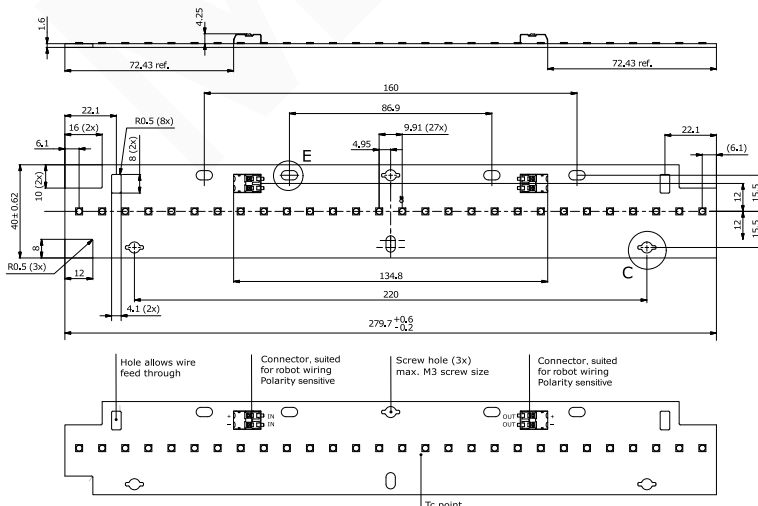
| Type | Typ. luminous flux at tp = 25 °C | Typ. luminous flux at tp = 65 °C | Typ. Colour temperature (CCT) | Colour rendering index CRI | Min. forward voltage at tp = 65 °C | Max. forward voltage at tp = 25 °C | Typ. forward current | Typ. power consumption at tp = 65 °C | Max. forward current | Efficacy of the module at tp = 25 °C | Efficacy of the module at tp = 65 °C |
|------|----------------------------------|----------------------------------|-------------------------------|----------------------------|------------------------------------|------------------------------------|----------------------|--------------------------------------|----------------------|--------------------------------------|--------------------------------------|
|------|----------------------------------|----------------------------------|-------------------------------|----------------------------|------------------------------------|------------------------------------|----------------------|--------------------------------------|----------------------|--------------------------------------|--------------------------------------|

Linear-Z LED-module – L280 W40 H8

| | | | | | | | | | | | |
|--------------|---------|---------|--------|-----|-------|-------|-------|-------|-------|---------|---------|
| | 2,736Lm | 2,603Lm | 2,700K | | | | 240mA | 19.8W | | 144Lm/W | 137Lm/W |
| MK280-14S2P- | 2,755Lm | 2,622Lm | 3,000K | | | | 240mA | 19.8W | | 145Lm/W | 138Lm/W |
| 280X40mm | 3,002Lm | 2,869Lm | 4,000K | >80 | 81.2V | 92.4V | 240mA | 19.8W | 500mA | 158Lm/W | 151Lm/W |
| -15849 | 3,002Lm | 2,869Lm | 5,000K | | | | 240mA | 19.8W | | 158Lm/W | 151Lm/W |
| | 3,002Lm | 2,869Lm | 5,700K | | | | 240mA | 19.8W | | 158Lm/W | 151Lm/W |
| | 3,002Lm | 2,869Lm | 6,500K | | | | 240mA | 19.8W | | 158Lm/W | 151Lm/W |

* The values mentioned above represent only statistical variables on account of the complex manufacturing process of light emitting diodes. The values do not necessarily correspond exactly to the actual parameters of every single product which can vary from the typical specification.
 ** Production tolerance of voltage and power consumption: +10%/-4%; Measuring tolerance of luminous flux: ±7%
 *** Measuring tolerance of CRI: ±2 | CRI > 80 on request

DIMENSIONS (All dimensions in mm)



Typical applications

- Installation in luminaires comerciais
- Office lighting
- Retail, corridor and shelf lighting
- T5/T8 replacement as built-in module
- Furniture lighting
- Backlighting for advertising

Website

<http://www.led-module.cn/pro1311>

