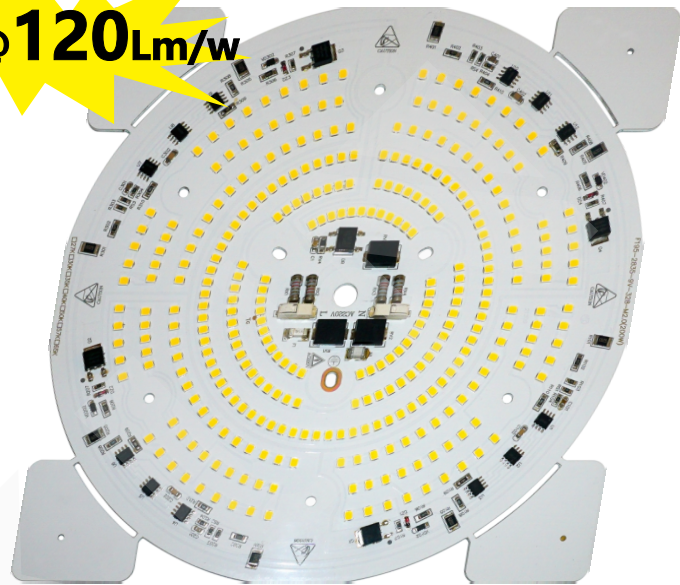


AC230V-2835-288H-D193-21209

Built-in LED modules with integrated driver for direct connection to mains voltage

- Module with integrated electronics
- Economic one-piece solution
- Easy refitting of existing luminaires
- Ideal for ceiling-mounted and wallmounted luminaires
- Enables thin designs of luminaires

200W@120Lm/w



Technical data

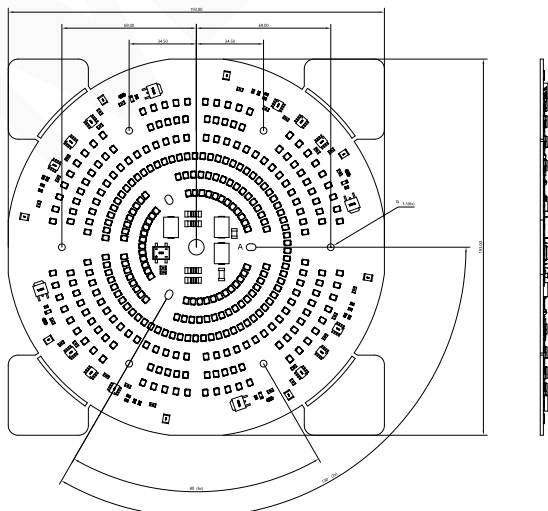
- Input voltage: 220-240 V, 50-60 Hz
- Power factor: > 0.9
- System efficacy of the module up to 130 lm/W
- High colour rendering index CRI > 70
- Colour accuracy initially: 5 SDCM
- On-board push-in terminals (WAGO 2060)
- Life-time of 50,000 hours
- 5-year guarantee

Specific technical data

Type	Typ. luminous flux at tp = 25 °C	Typ. Colour temperature (CCT)	Colour rendering index CRI	AC voltage 50 - 60 Hz (V)	Typ. power consumption at tp = 65 °C	Input current (mA)	Efficacy of the module at tp = 65 °C
21209	22,000Lm	3000K	>80	220 - 240V	200W	900mA	110Lm/w
21209	24,000Lm	4000K	>80	220 - 240V	200W	900mA	120Lm/w
21209	24,000Lm	5000K	>80	220 - 240V	200W	900mA	120Lm/w

Tolerance range for optical and electrical data: ±10 %.

DIMENSIONS (All dimensions in mm)



Typical applications

- Installation in luminaires comerciales
- High bay lighting
- Industrial pendant lighting
- Panel Light lighting
- Ceiling lighting

Website

<http://www.led-module.cn/prol287>

